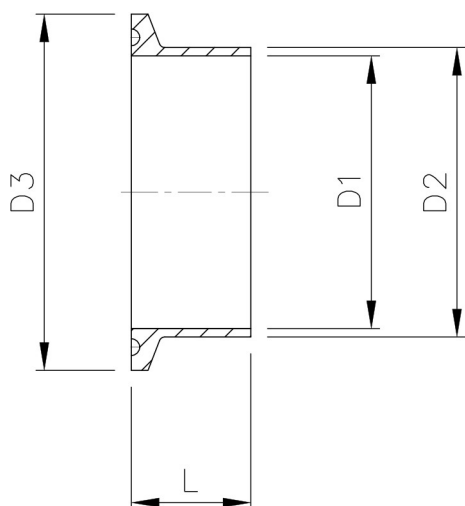


Connections CLAMP DIN 32676 / Spojení CLAMP DIN 32676

CLAMP Ferrule DIN 32676 / CLAMP Hrdlo navařovací DIN 32676

DN	D1	D2	D3	L	Kg	K. číslo / C. number
DN15	15	18	34	18	0,03	0101010014
DN20	19	22	34	18	0,03	0101010019
DN20	19	22	50.5	21.5	0,03	0101010020
DN25	25	28	50.5	21.5	0,07	0101010025
DN32	31	34	50.5	21.5	0,07	0101010032
DN40	37	40	50.5	21.5	0,07	0101010040
DN50	49	52	64	21.5	0,07	0101010050
DN65	66	70	91	21.5	0,10	0101010065
DN80	81	85	106	21.5	0,20	0101010080
DN100	100	104	119	21.5	0,22	0101010100
DN125	125	129	144.5	21.5	0,52	0101010125
DN150	150	154	167	21.5	0,70	0101010150
DN200	198	204	217.5	21.5		0101010200
DN250	248	254	268	28		0101010250
DN300	299	305	319	28		0101010300



- Material: Stainless steel 1.4301 (AISI 304)
- Standard: DIN 32676
- DN15-50: max. 10 bar
- DN65-100: max. 8 bar
- Ra < 0.8

GF technologic, s.r.o.
 Za Mlýnem 382
 696 02 Ratiškovice
 Czech Republic
 E-mail: info@gftechnologic.com
 Tel: +420 602 739 141
 VAT number: CZ04398530
 Reference number: C89669, kept by the Regional Court in Brno, Czech Republic

GF technologic